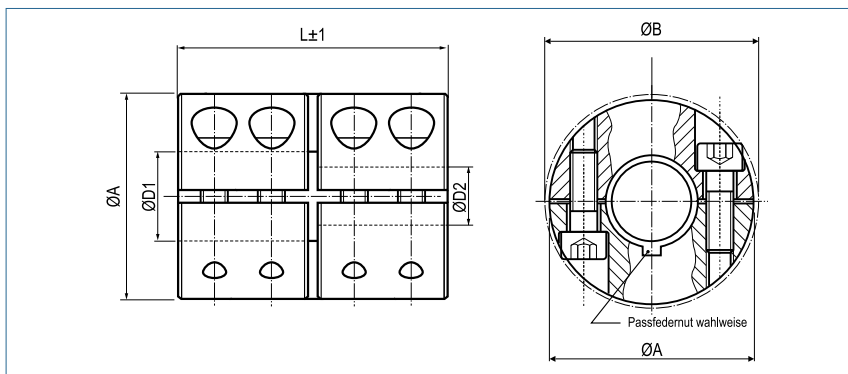


Schalenkupplungen

geteilt, in Edelstahl



Bestellbeispiel für Standardkupplung

KBST-G-VA - 50

Diese Kupplung wird automatisch mit durchgängiger Bohrung 50H7 geliefert.

Typ Größe

Bestellbeispiel für Kupplung mit unterschiedlichen Bohrungen

KBST-G-VA - 50 - 45 - 48

Diese Kupplung entspricht den Abmessungen der KBST-G-50 und wird mit der Bohrungskombination 45H7 - 48H7 geliefert.

Typ Größe D1 D2

| KBST - G - VA Schalenkupplung geteilt - Edelstahl rostfrei | | | | | | | | | |
|--|-------------------------|-----------------------------|------------------------------|------|------|------|--------------------------|-------------------------------|-----------|
| Größe | Drehmoment Edelstahl Nm | Abmessungen - Dimensions | | | | | Schrauben (ISO4762) 12.9 | Anzugsmoment der Schrauben Nm | Gewicht g |
| | | Standard-bohrung D1 / D2 H7 | abgesetzte Bohrungen von-bis | A mm | B mm | L mm | | | |
| 6 | 25 | 6 | 5-7 | 18 | 21.2 | 30 | M3x8 | 1.6 | 47 |
| 8 | 40 | 8 | 5-12 | 24 | 26.8 | 35 | M3x 10 | 1.6 | 102 |
| 10 | 90 | 10 | 5-15 | 29 | 32.7 | 45 | M4x 12 | 3.9 | 185 |
| 12 | 90 | 12 | 5-15 | 29 | 32.7 | 45 | M4x 12 | 3.9 | 180 |
| 14 | 160 | 14 | 10-17 | 34 | 39.1 | 50 | M5x 16 | 7.6 | 272 |
| 15 | 160 | 15 | 10-17 | 34 | 39.1 | 50 | M5x 16 | 7.6 | 266 |
| 16 | 160 | 16 | 10-17 | 34 | 39.1 | 50 | M5x 16 | 7.6 | 261 |
| 20 | 300 | 20 | 10-24 | 42 | 48.2 | 65 | M6x 16 | 13.2 | 518 |
| 25 | 325 | 25 | 10-26 | 45 | 50.8 | 75 | M6x 16 | 13.2 | 623 |
| 30 | 400 | 30 | 20-32 | 53 | 58.1 | 83 | M6x 18 | 13.2 | 920 |
| 35 | 925 | 35 | 20-40 | 67 | 74.1 | 95 | M8x 25 | 32 | 1880 |
| 40 | 1100 | 40 | 30-50 | 77 | 83.4 | 108 | M8x 25 | 32 | 2710 |
| 50 | 1875 | 50 | 40-52 | 85 | 93.2 | 124 | M10x 25 | 63 | 3520 |

| Größe | Ø Bohrung (mm) | | | | | | | | | | | | | | | | | | | |
|-------|----------------|----|-----|-----|-----|-----|-----|-----|-----|------|------|------|------|------|------|------|------|------|------|------|
| | 5 | 6 | 12 | 14 | 16 | 18 | 20 | 22 | 24 | 28 | 30 | 32 | 34 | 36 | 38 | 40 | 44 | 46 | 50 | 52 |
| 6 | 24 | 29 | | | | | | | | | | | | | | | | | | |
| 8 | 24 | 29 | 57 | | | | | | | | | | | | | | | | | |
| 10 | 44 | 53 | 106 | 124 | | | | | | | | | | | | | | | | |
| 12 | 44 | 53 | 106 | 124 | | | | | | | | | | | | | | | | |
| 14 | | | 172 | 200 | 229 | | | | | | | | | | | | | | | |
| 15 | | | 172 | 200 | 229 | | | | | | | | | | | | | | | |
| 16 | | | 172 | 200 | 229 | | | | | | | | | | | | | | | |
| 20 | | | 243 | 284 | 324 | 365 | 405 | 446 | 486 | | | | | | | | | | | |
| 25 | | | 243 | 284 | 324 | 365 | 405 | 446 | 486 | | | | | | | | | | | |
| 30 | | | | | | | 405 | 446 | 486 | 567 | 608 | 648 | | | | | | | | |
| 35 | | | | | | | 742 | 816 | 890 | 1038 | 1112 | 1186 | 1261 | 1335 | 1409 | 1483 | | | | |
| 40 | | | | | | | | | | | 1112 | 1186 | 1261 | 1335 | 1409 | 1483 | 1631 | 1706 | 1854 | |
| 50 | | | | | | | | | | | | | | | | 2357 | 2593 | 2711 | 2946 | 3064 |

+ Passfedernuten nach DIN 6885/1 sind bei allen Bohrungskombinationen möglich.